

Adventskalender Weihnachtsmann

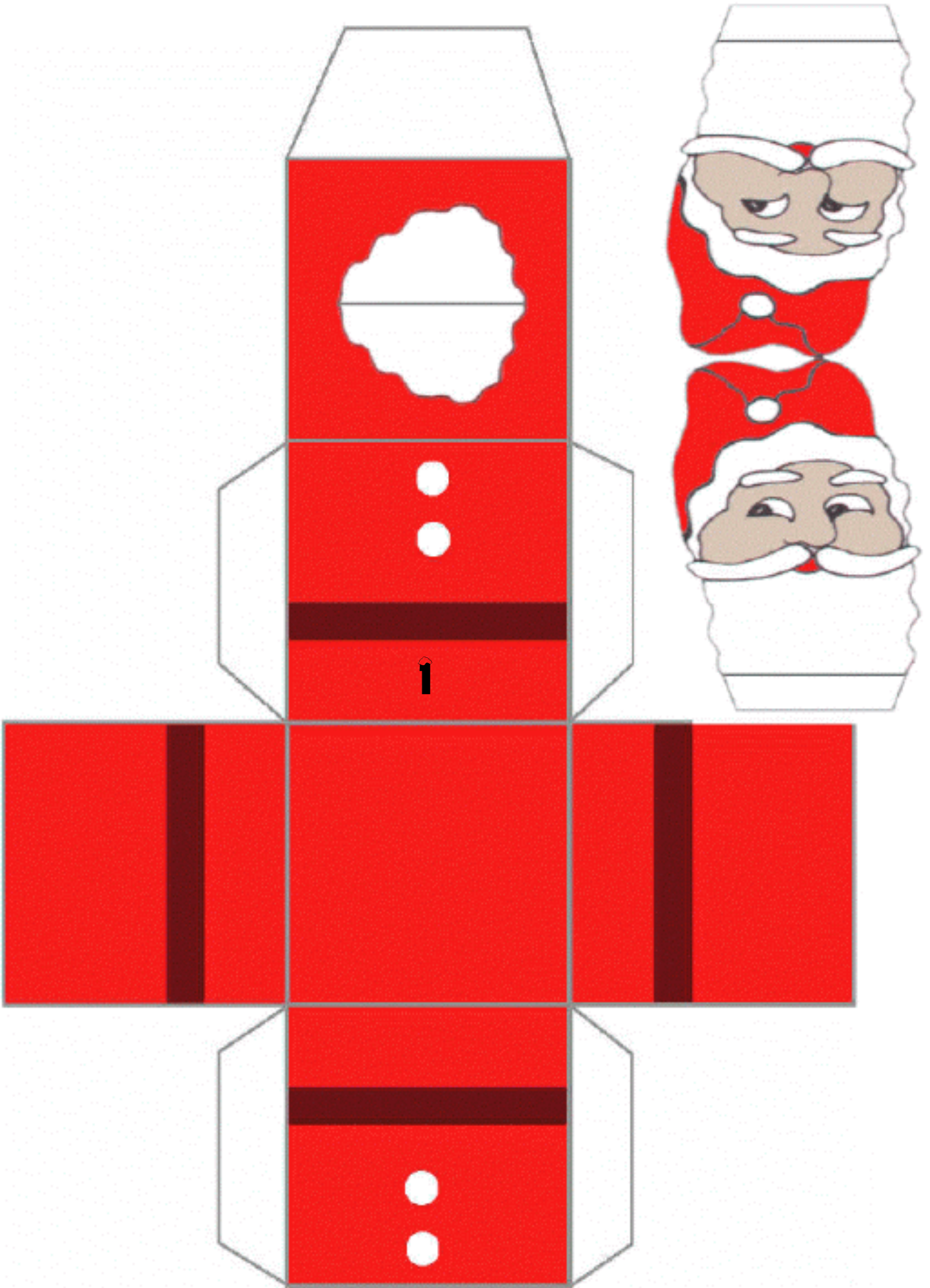


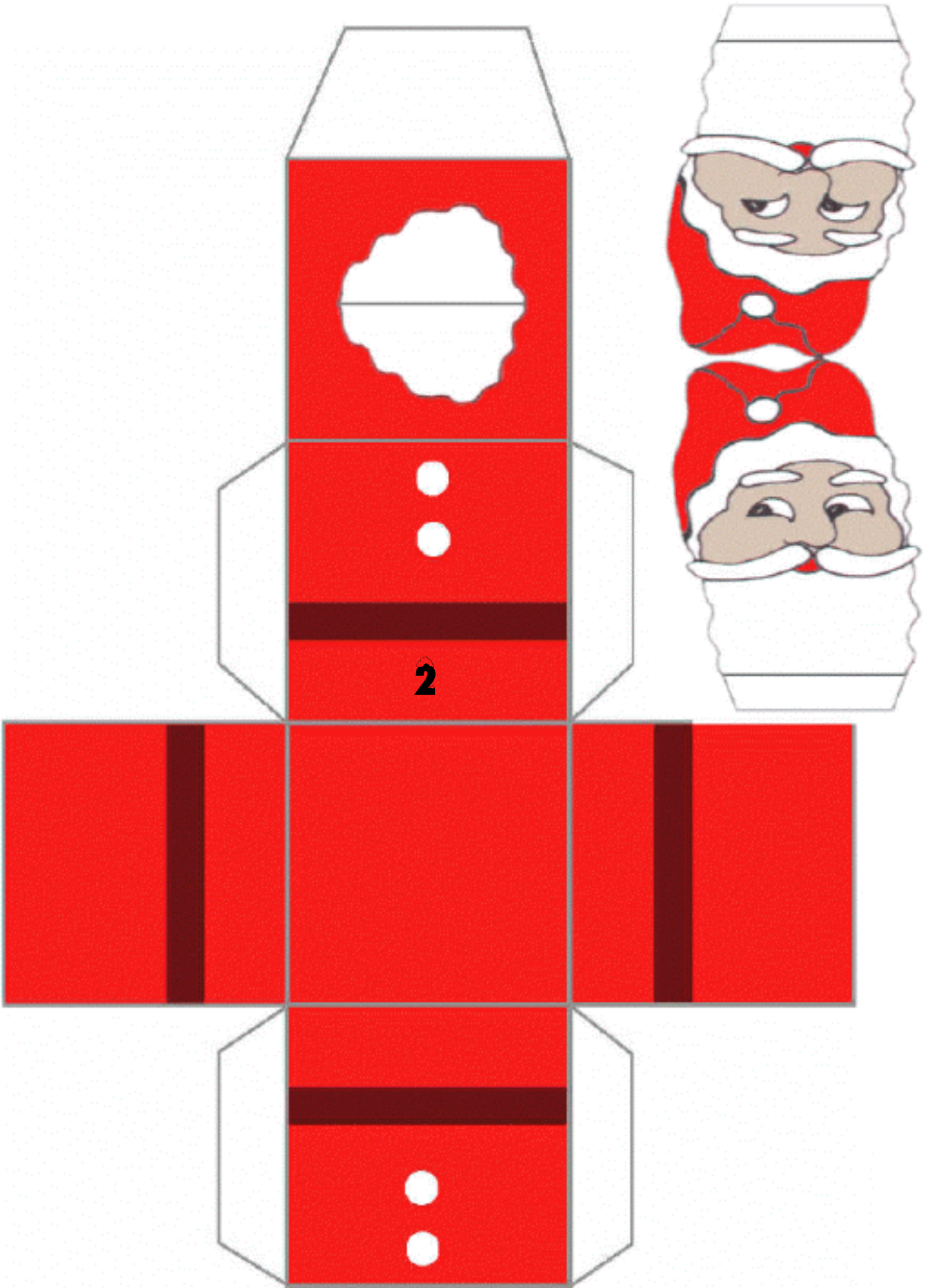
So geht es:

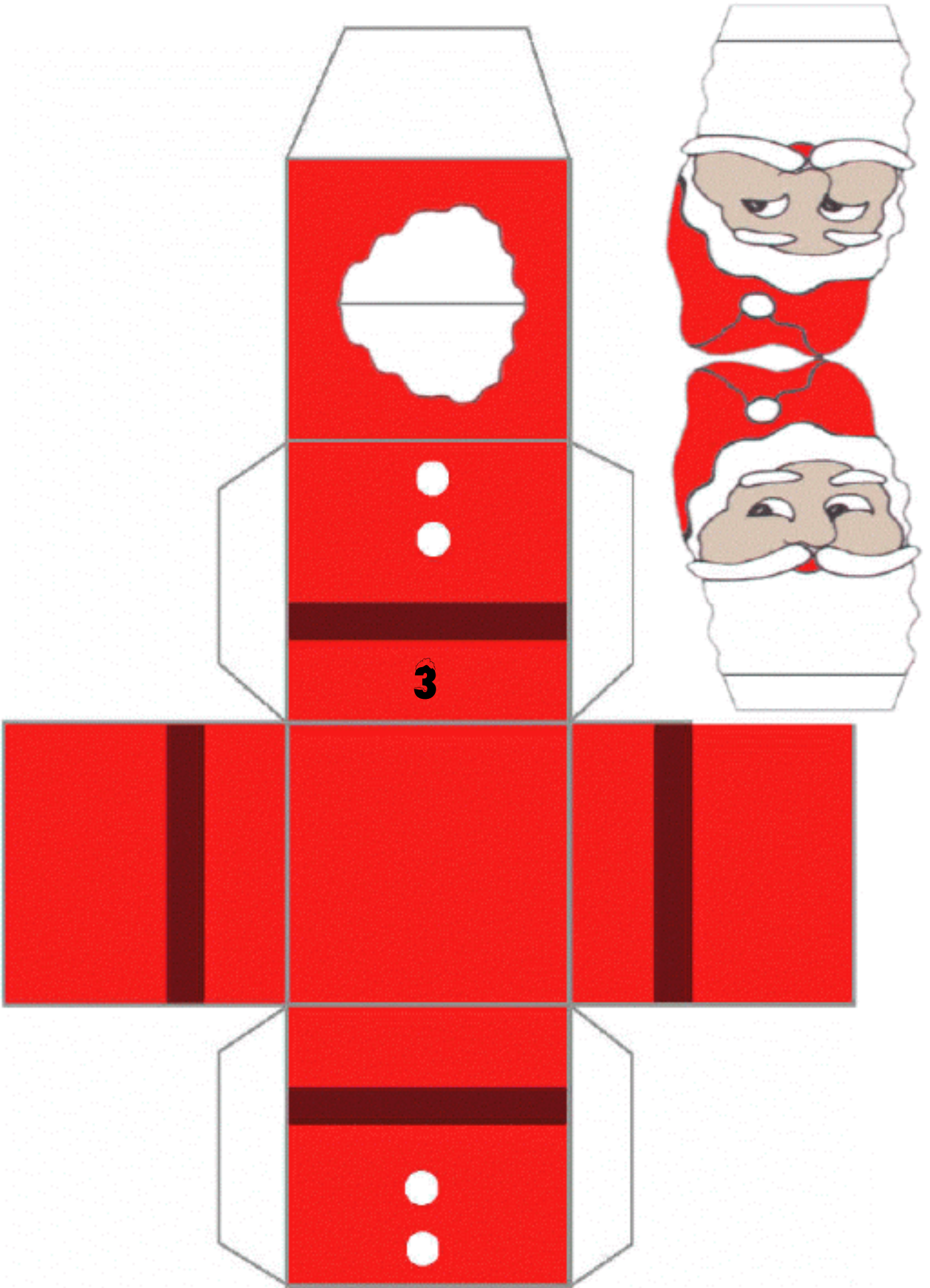
So wird' s gemacht: Vorlage auf InkJet-Karton ausdrucken oder auf Normalpapier und auf dünnen Karton kleben, ausschneiden. Kiste falten und zusammenkleben. In den Deckel mit einem Cutter einen Schlitz schneiden. Kopf deckungsgleich zusammenkleben, in den Schlitz stecken, Klebelaschen nach außen biegen und festkleben.

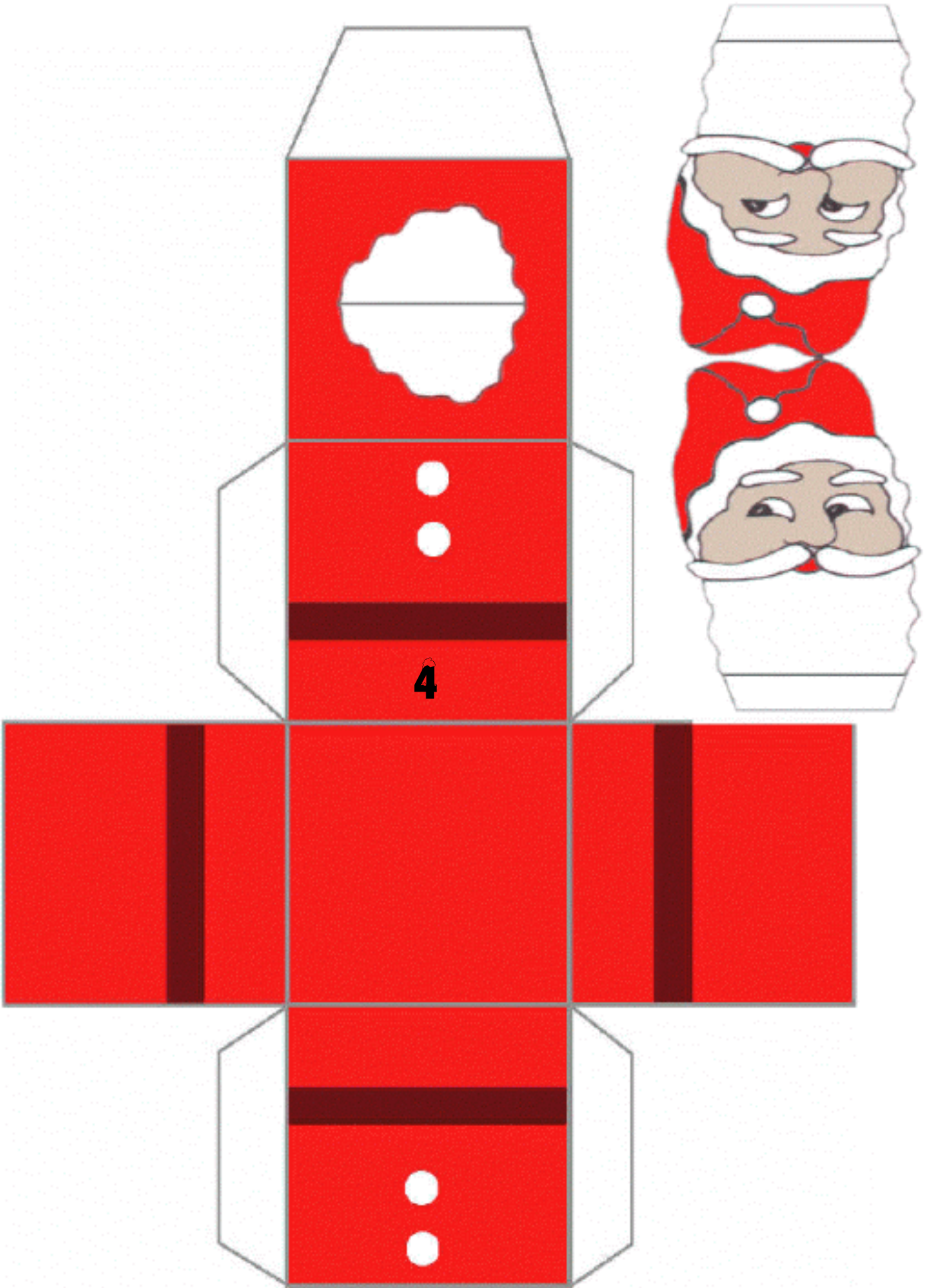
Tipps, womit man die Adventskalender befüllen kann, findest Du [hier](#).

Weitere Bastelanleitungen bei <http://www.bastel-tipps.de/>

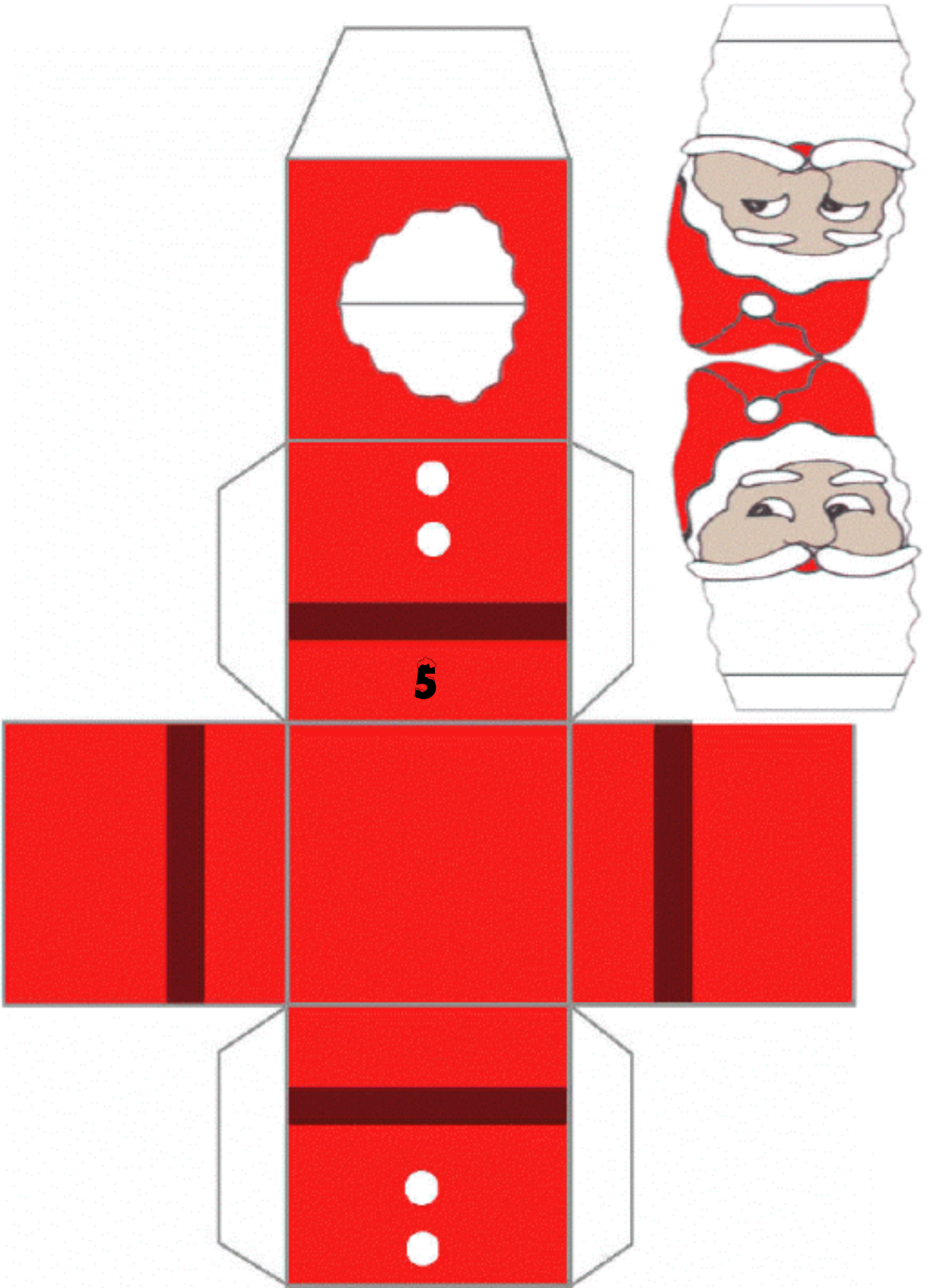


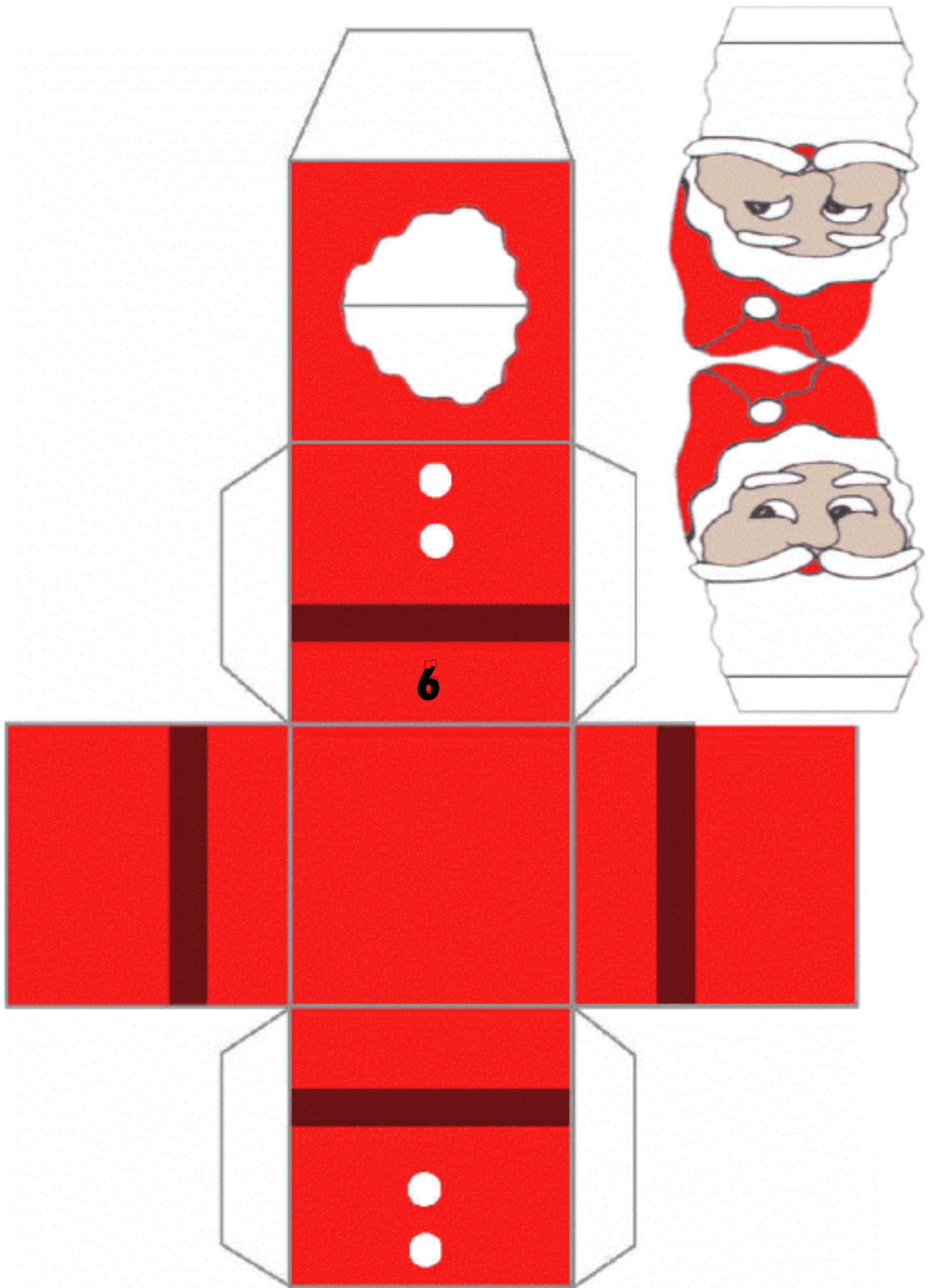


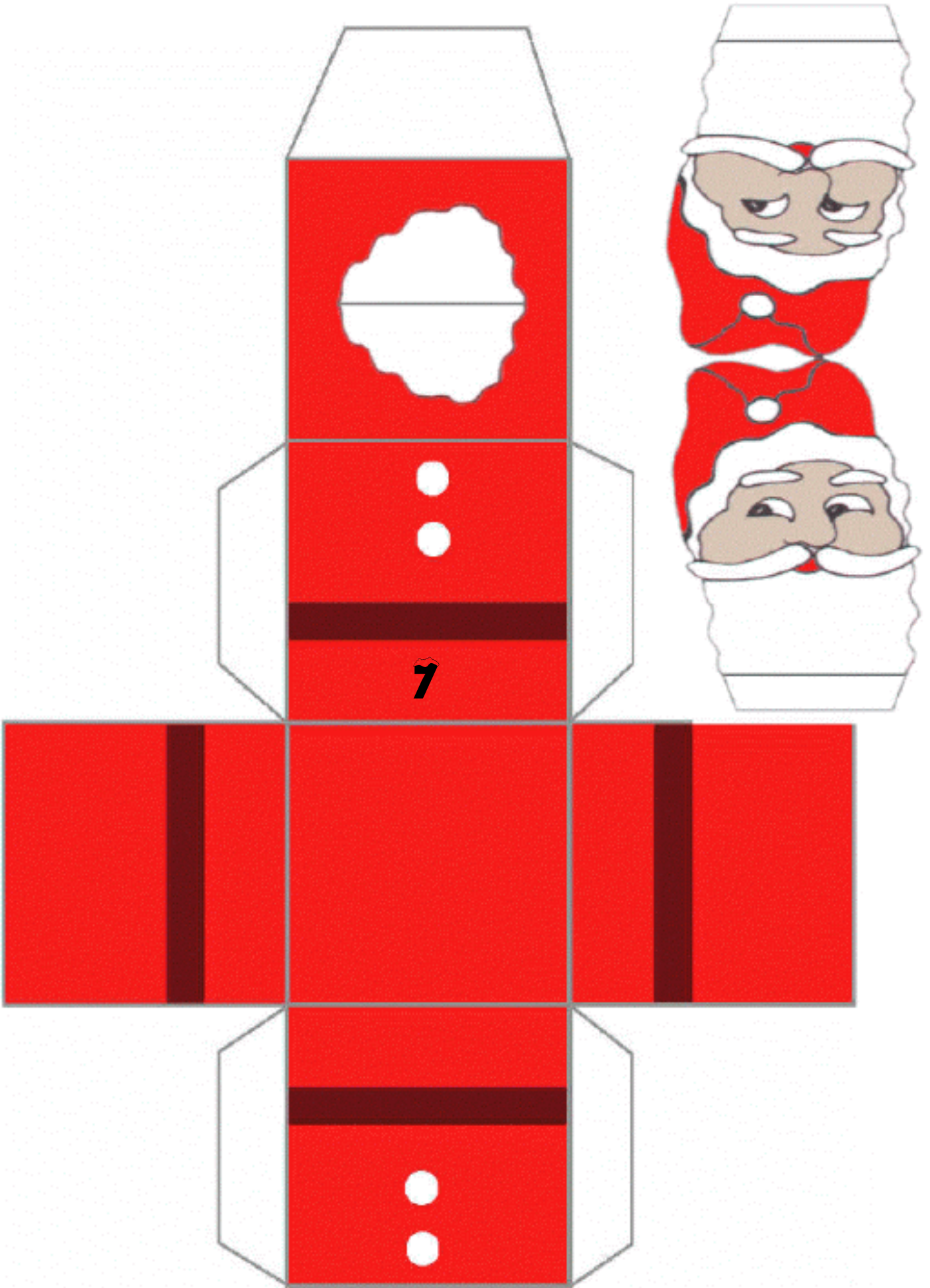




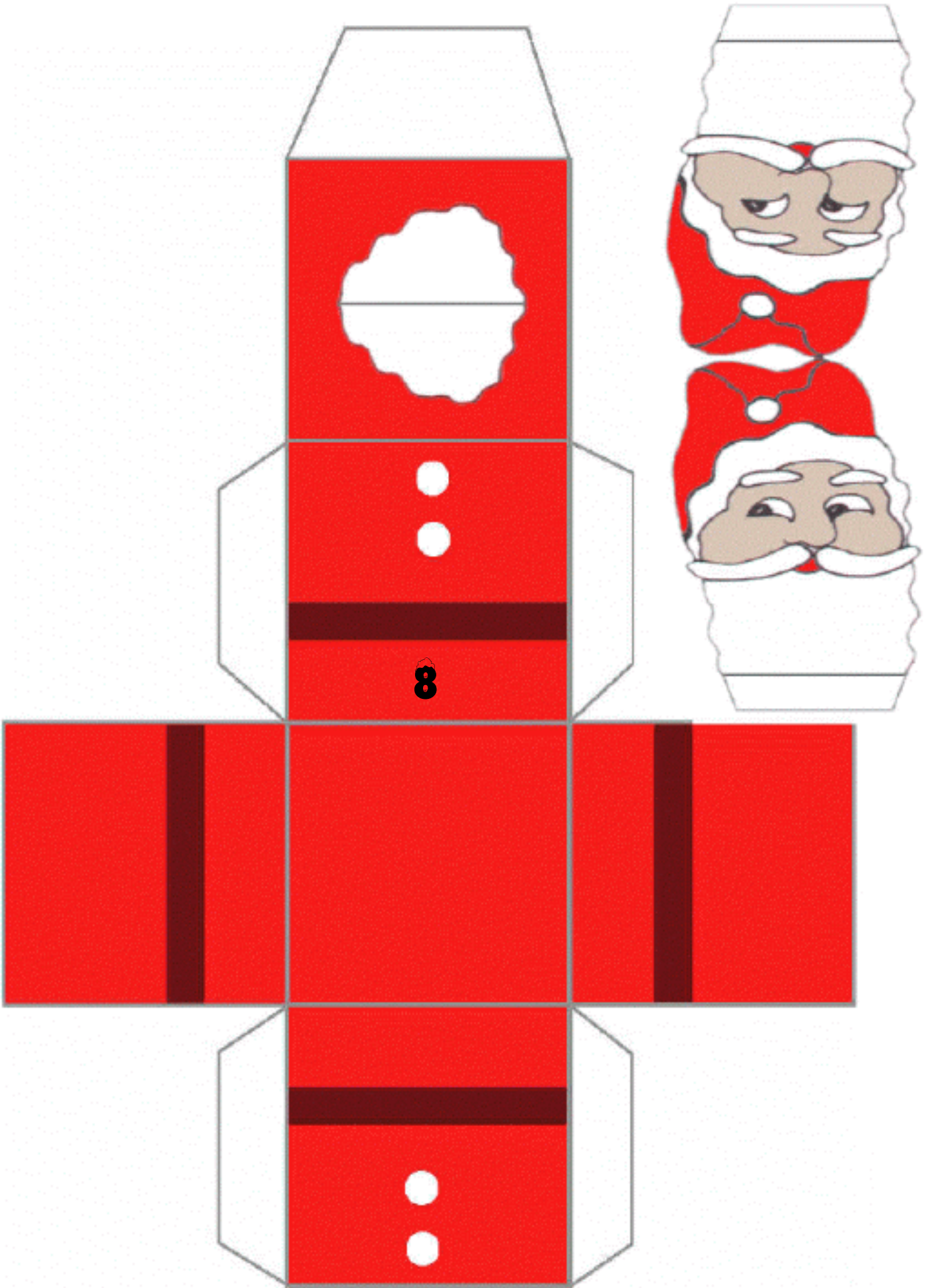
4

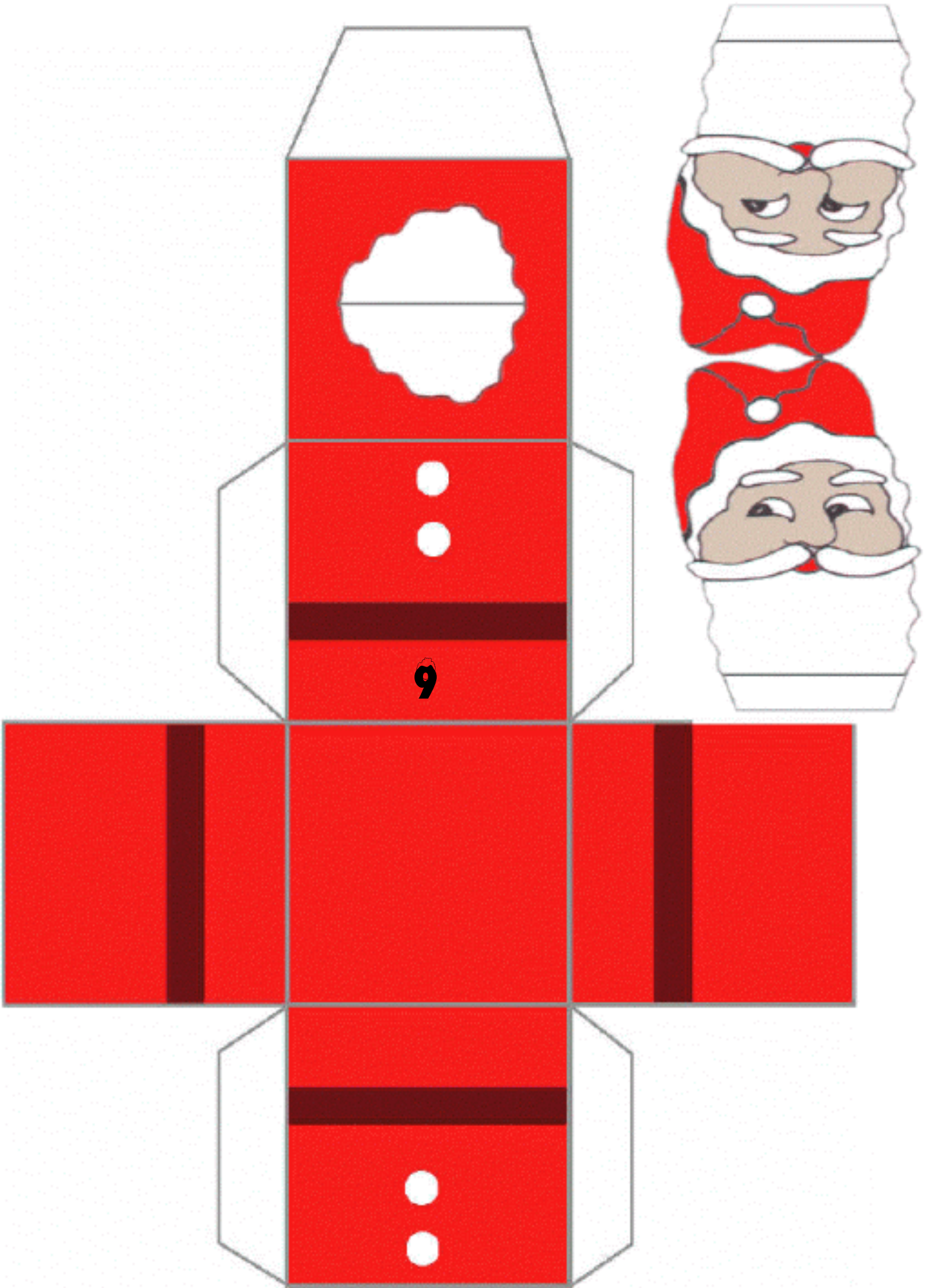


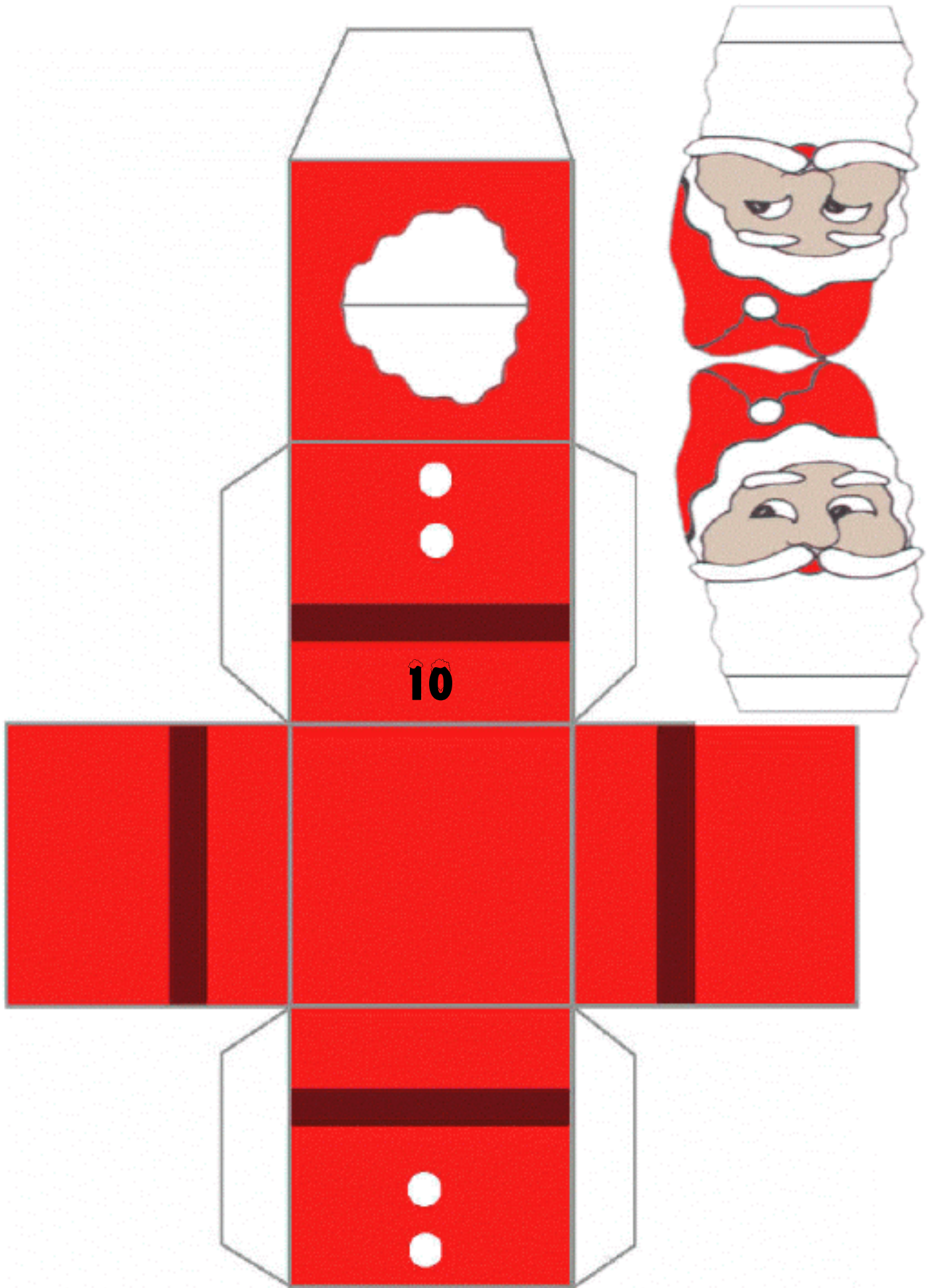


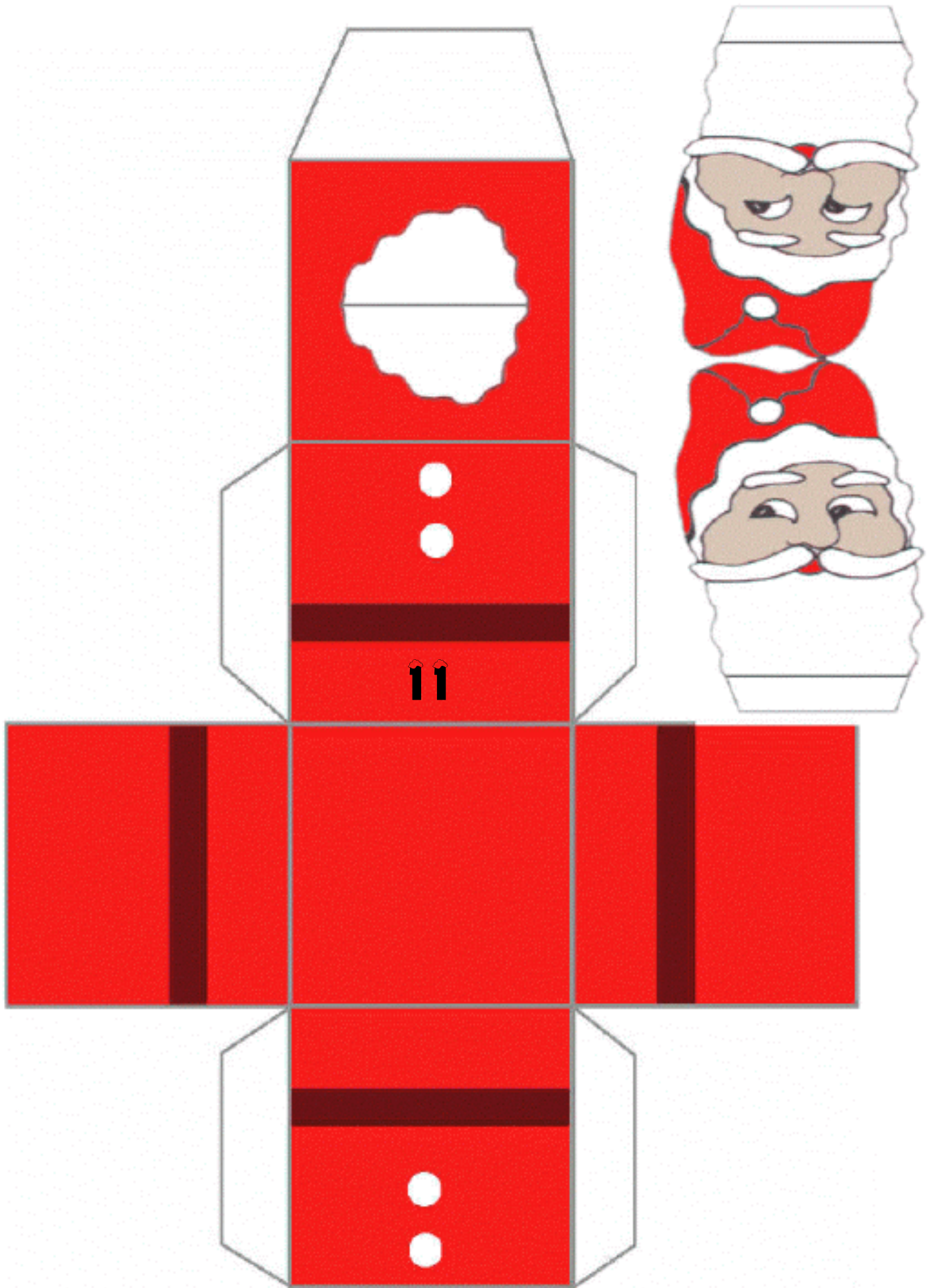


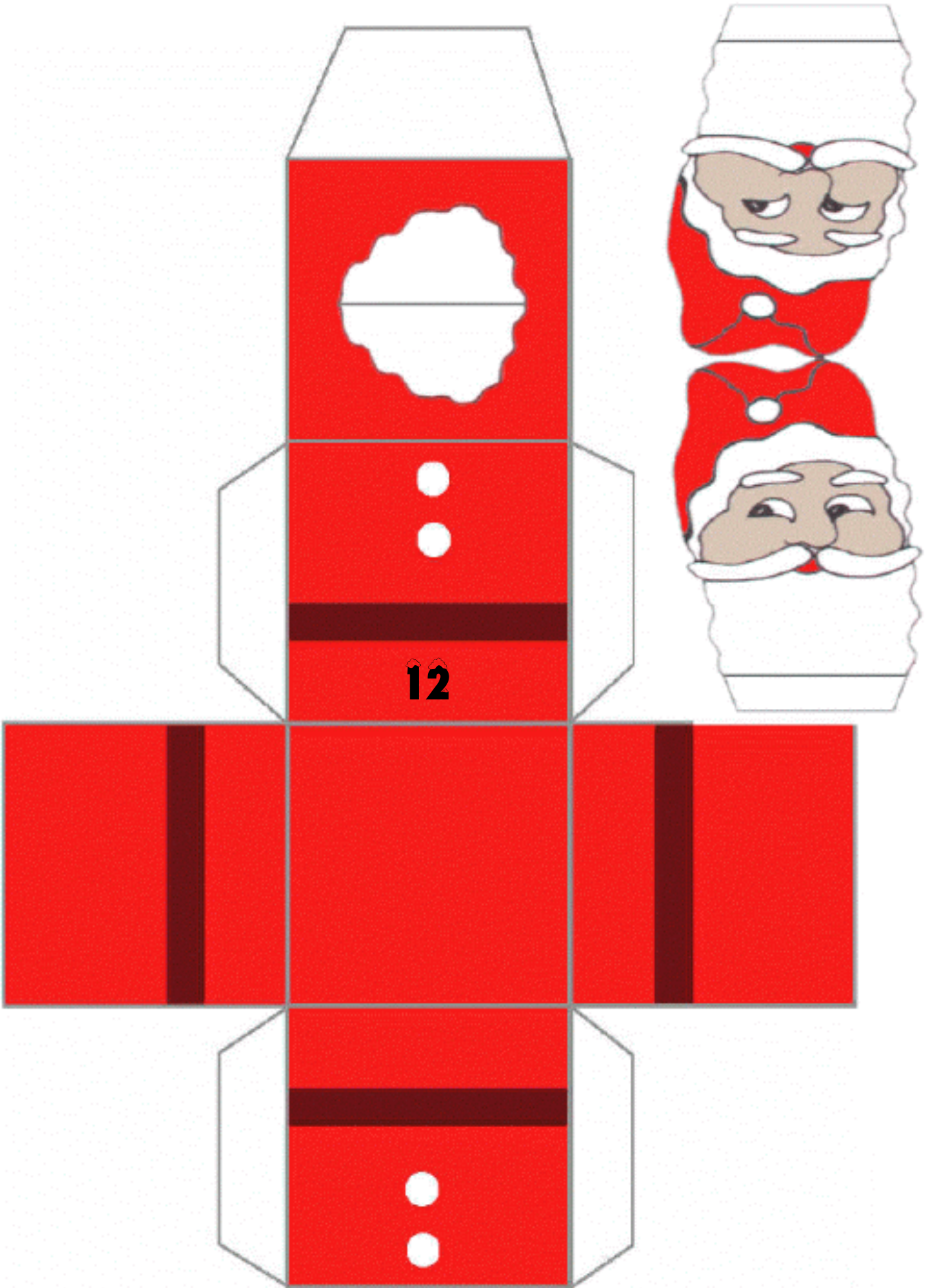
7



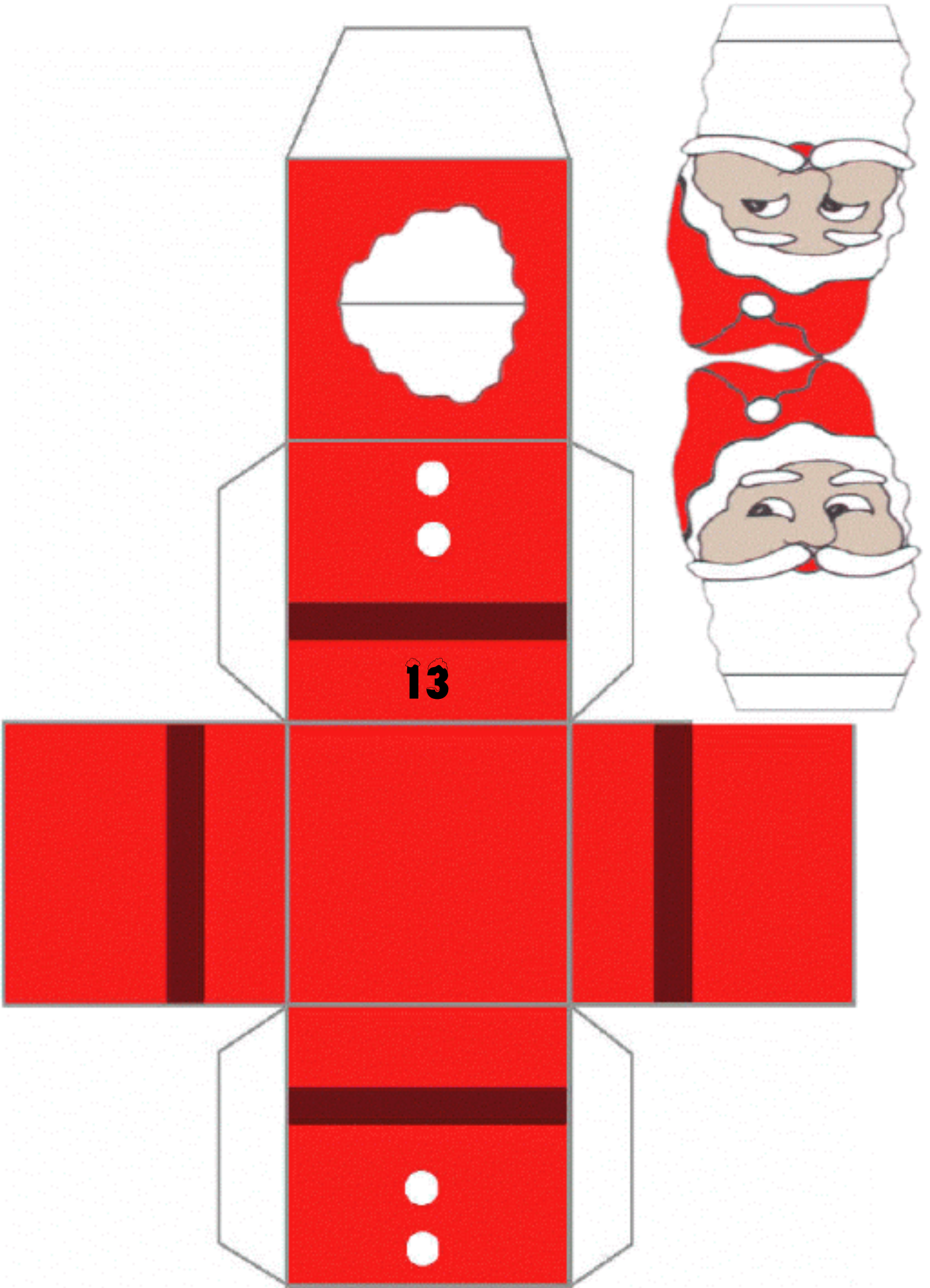




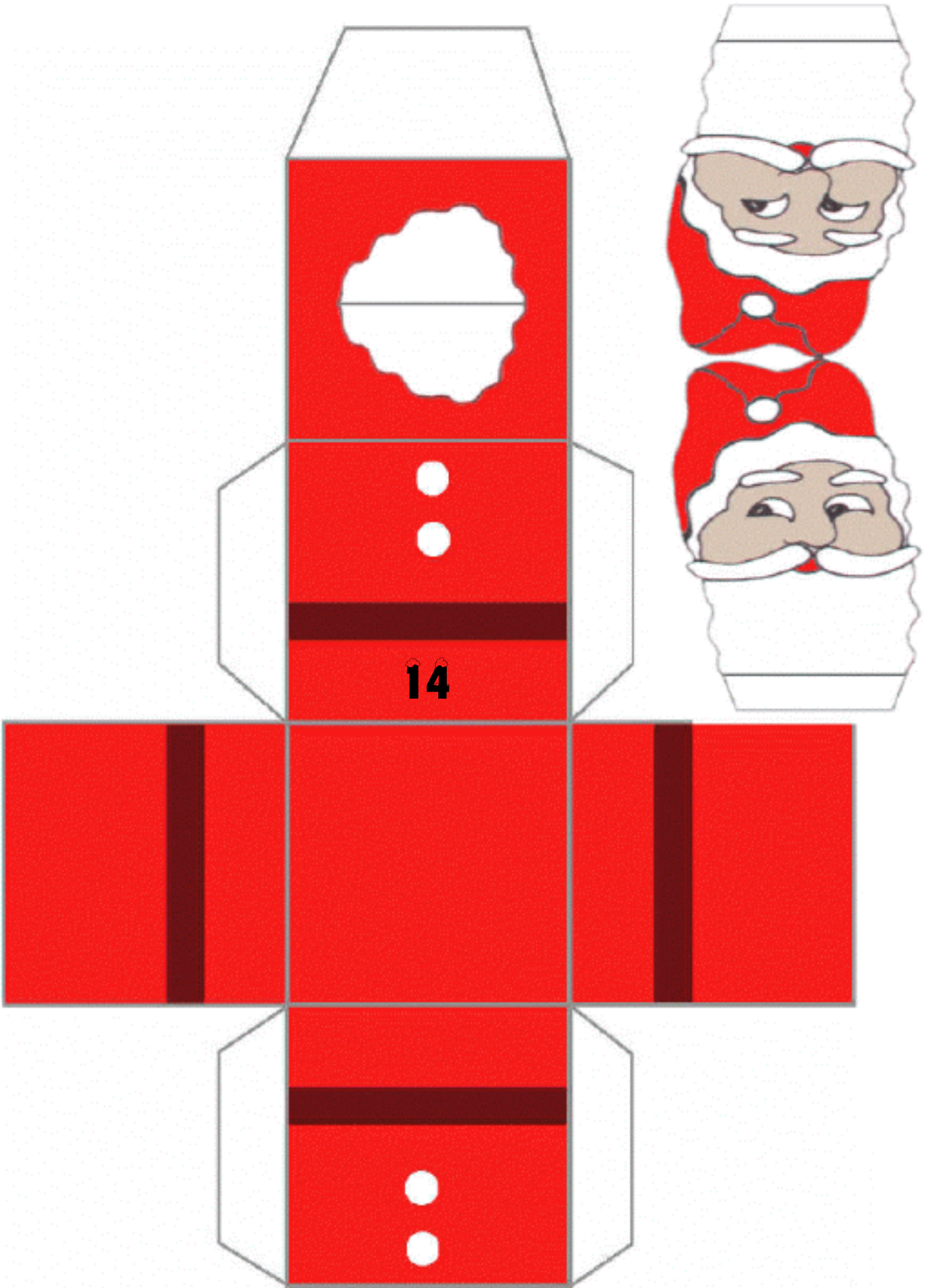




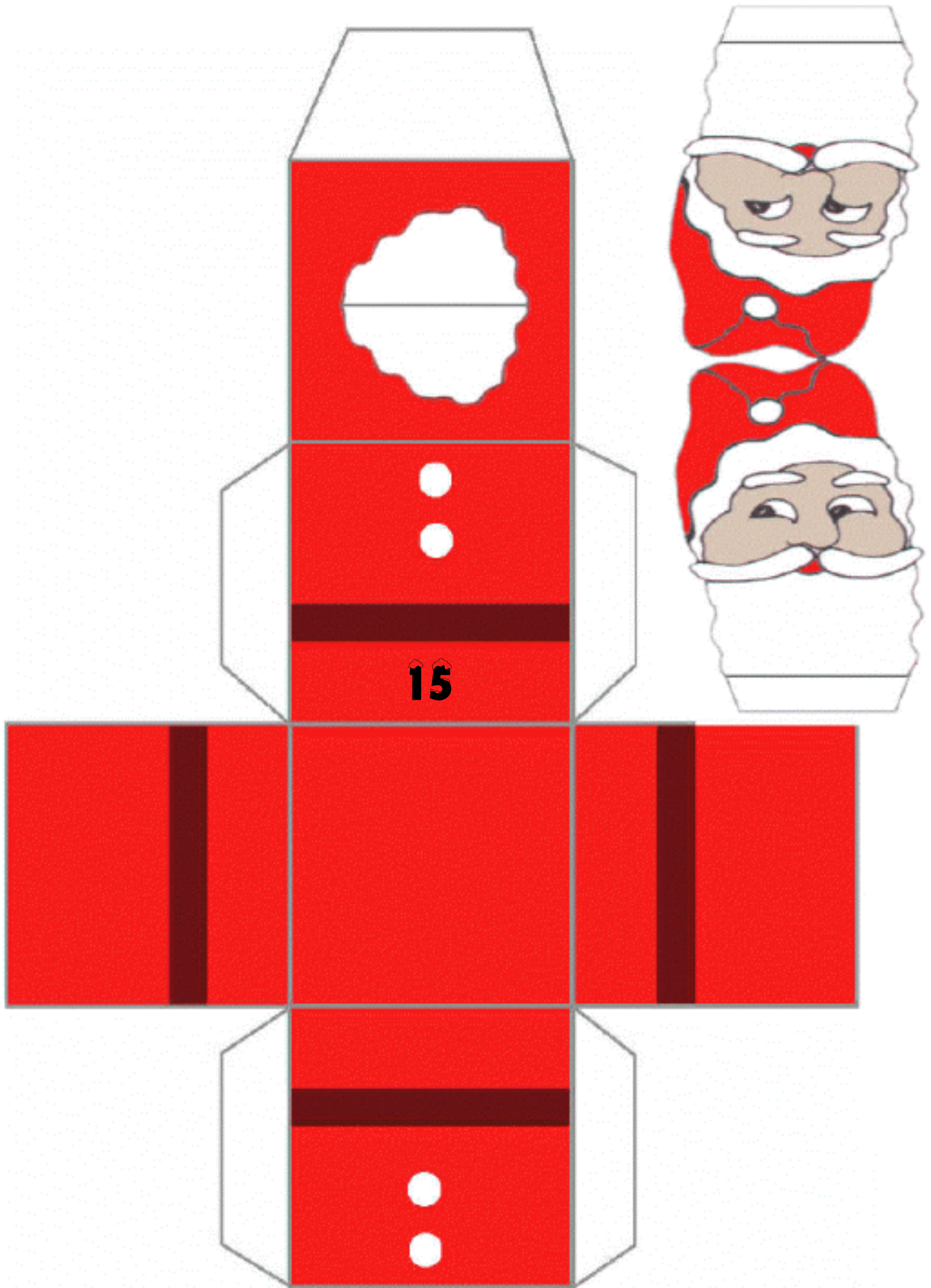
12

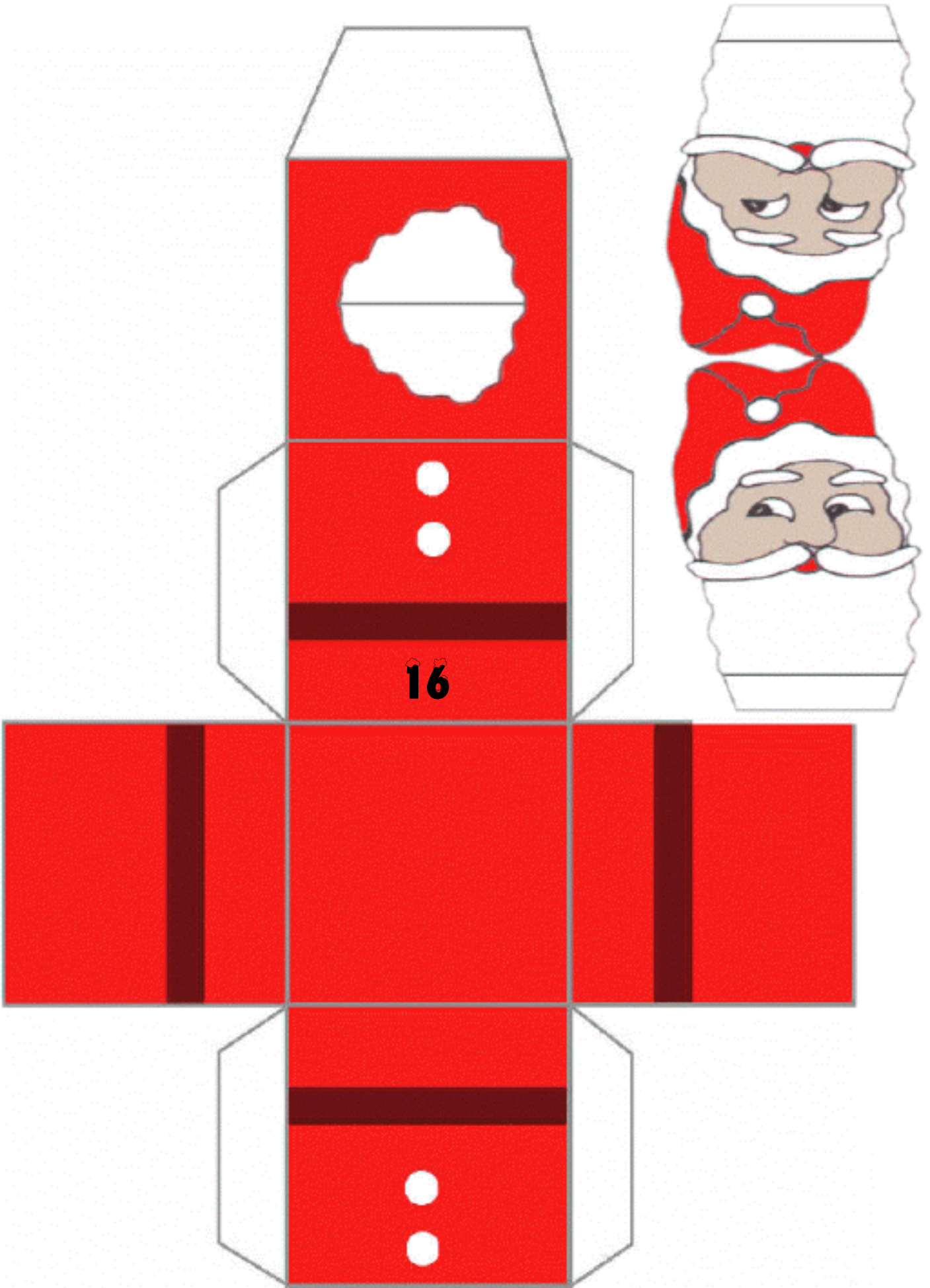


13

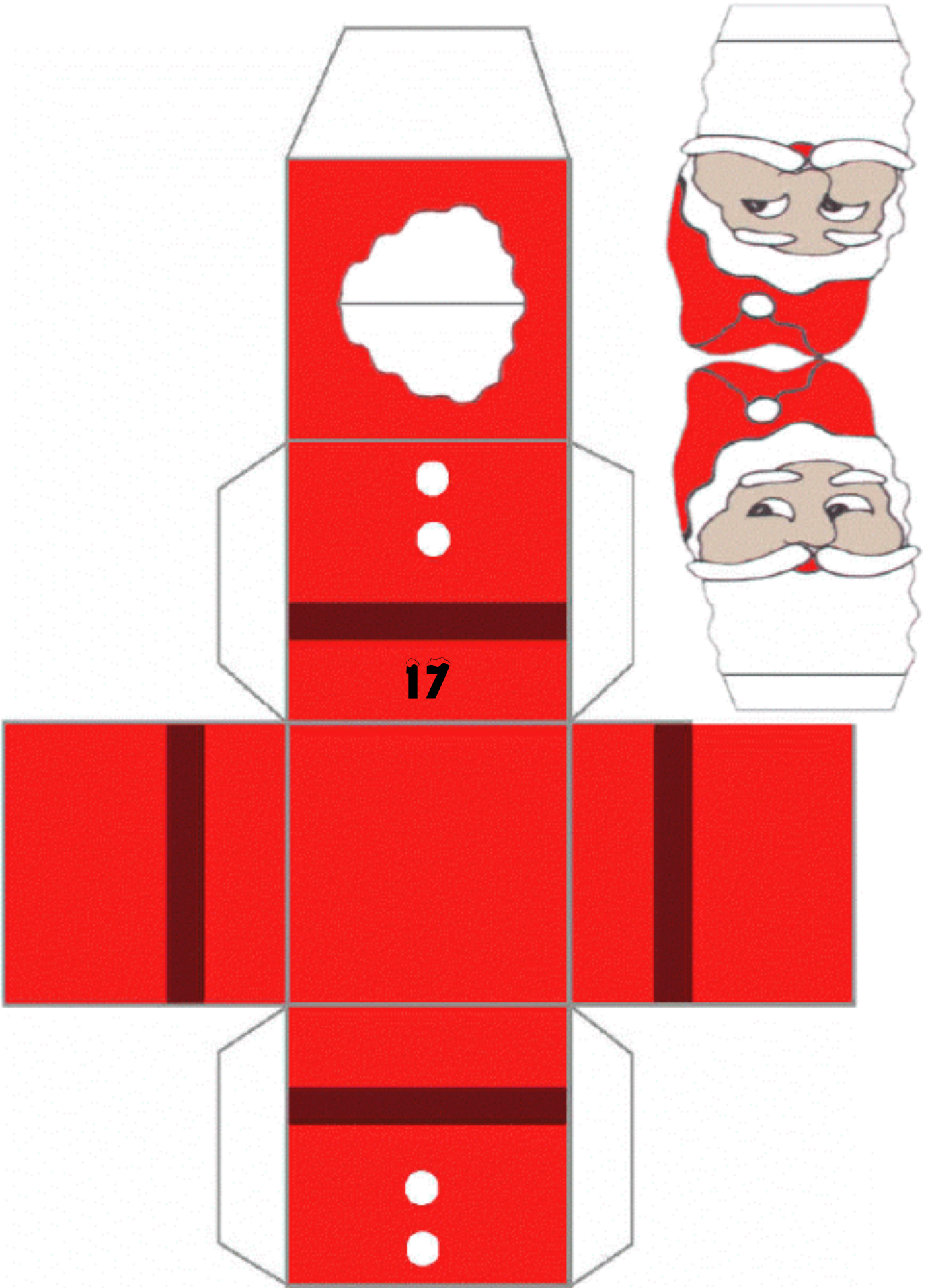


14

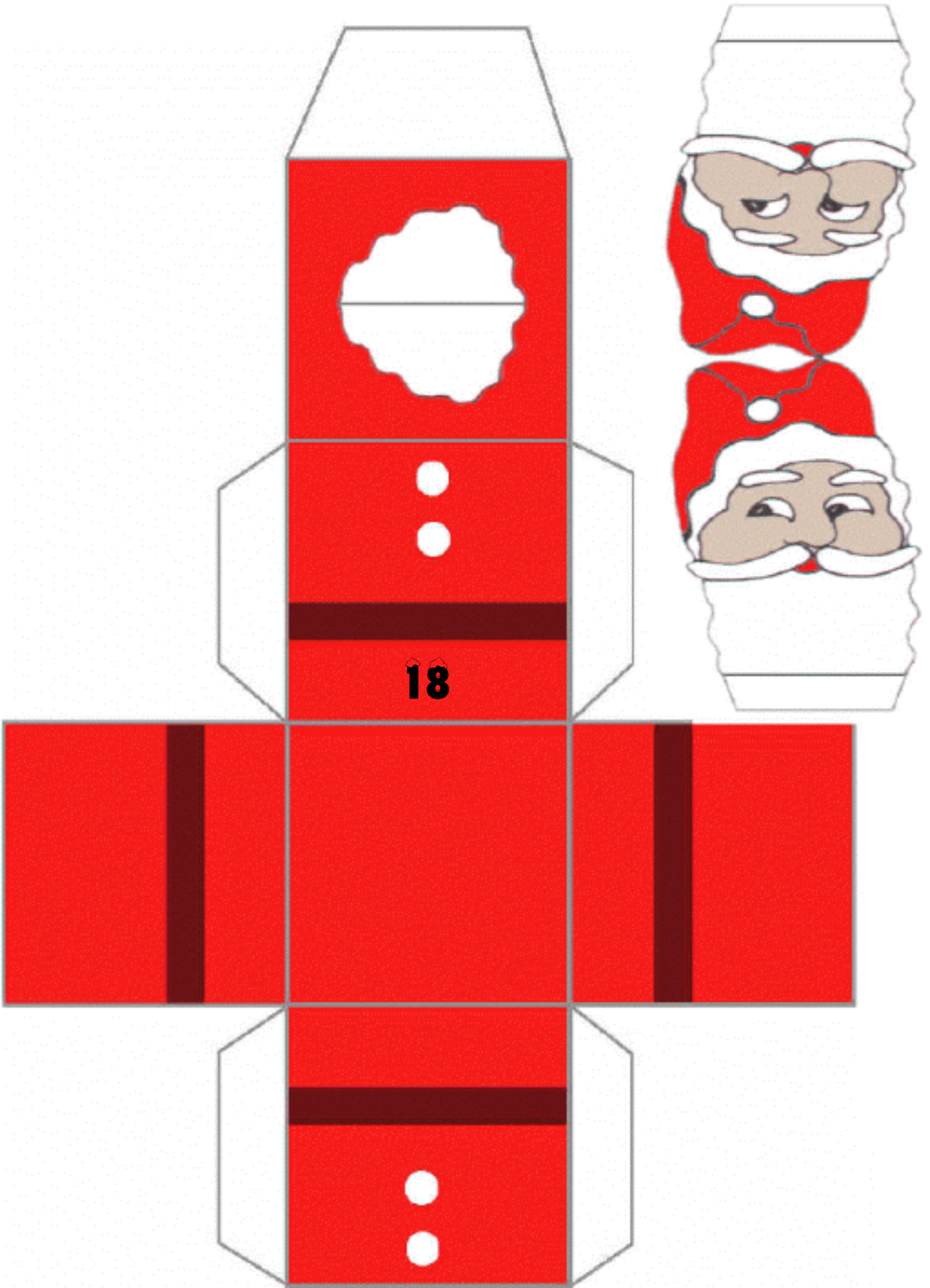




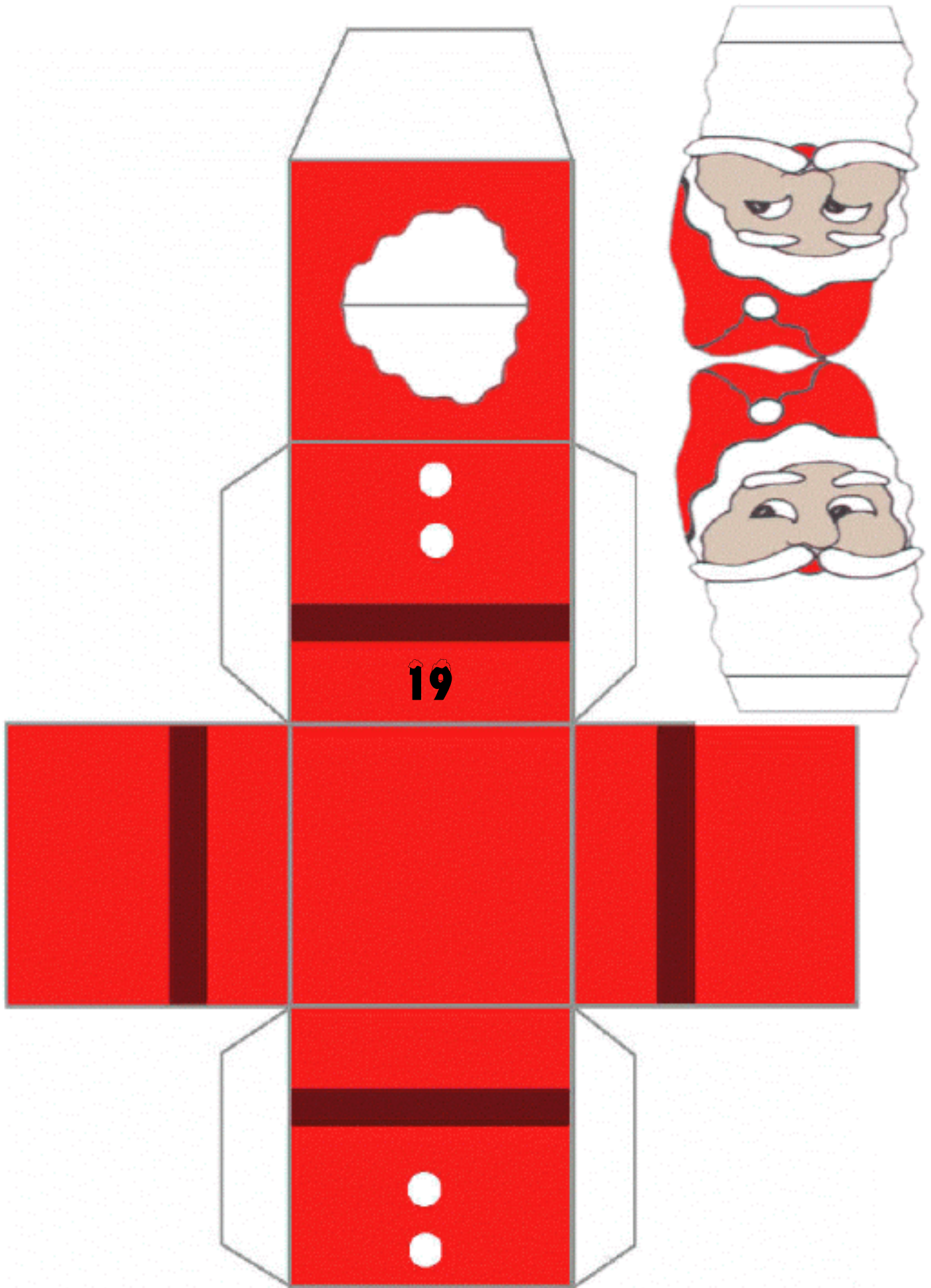
16

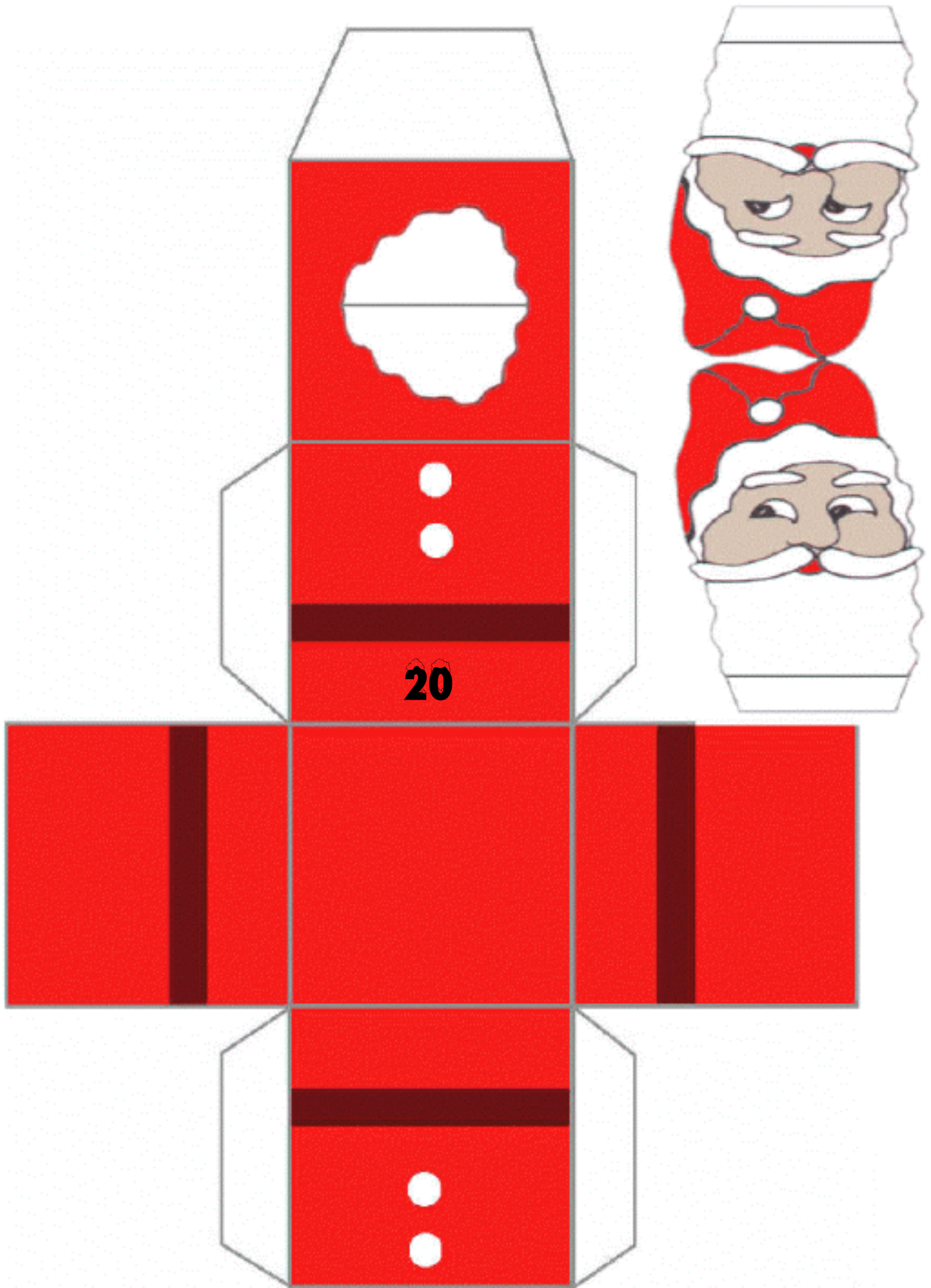


17

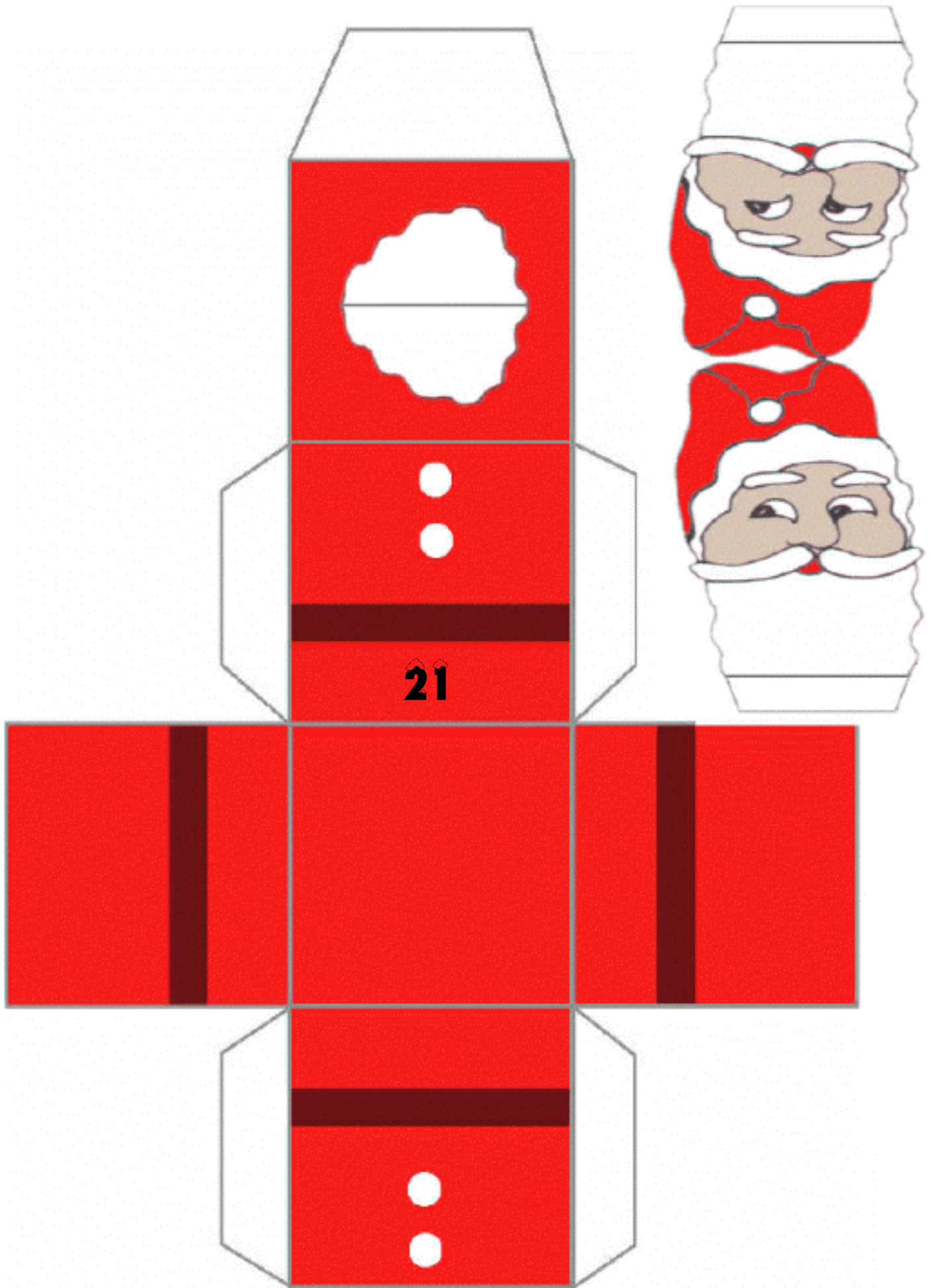


18

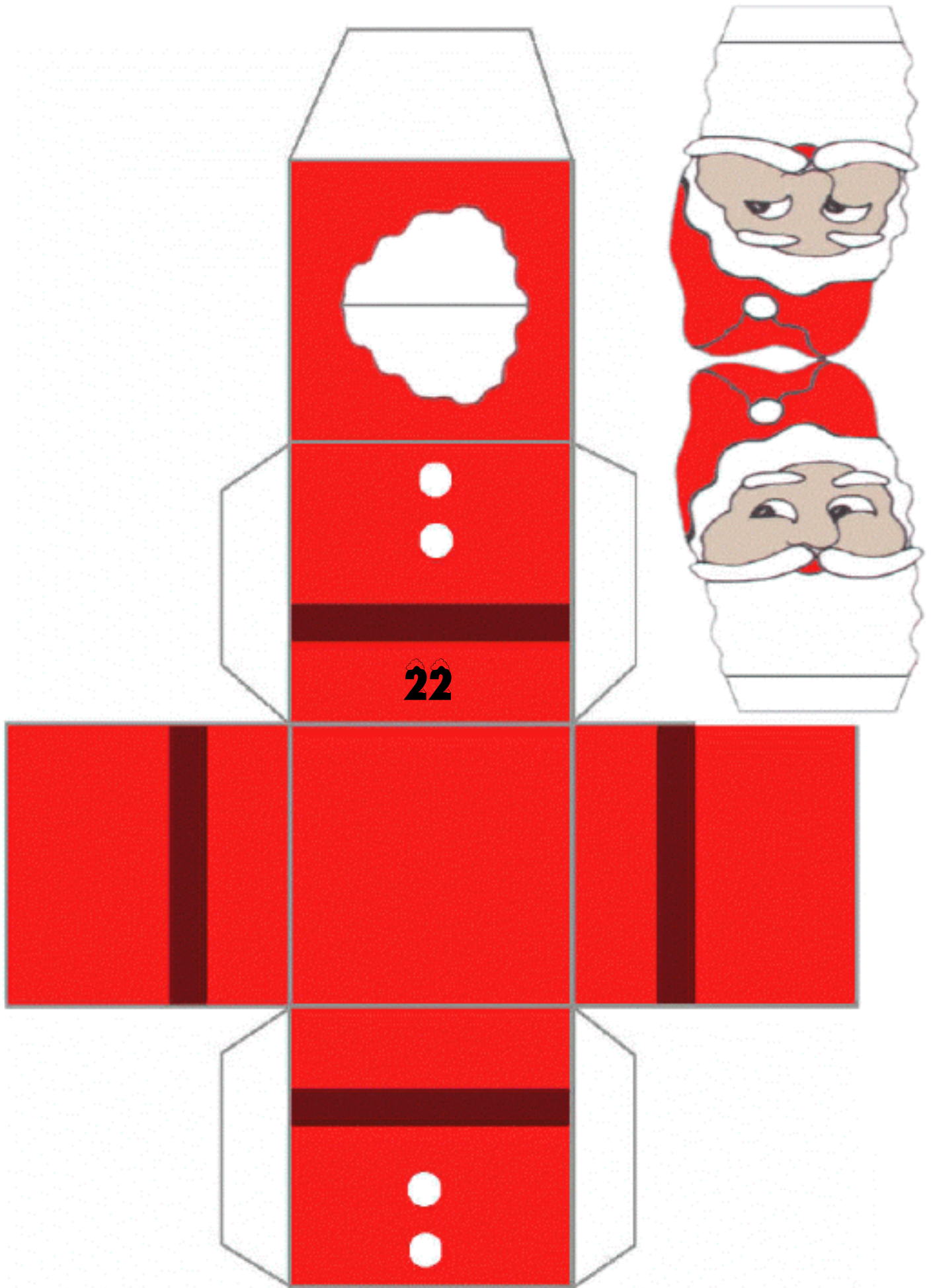




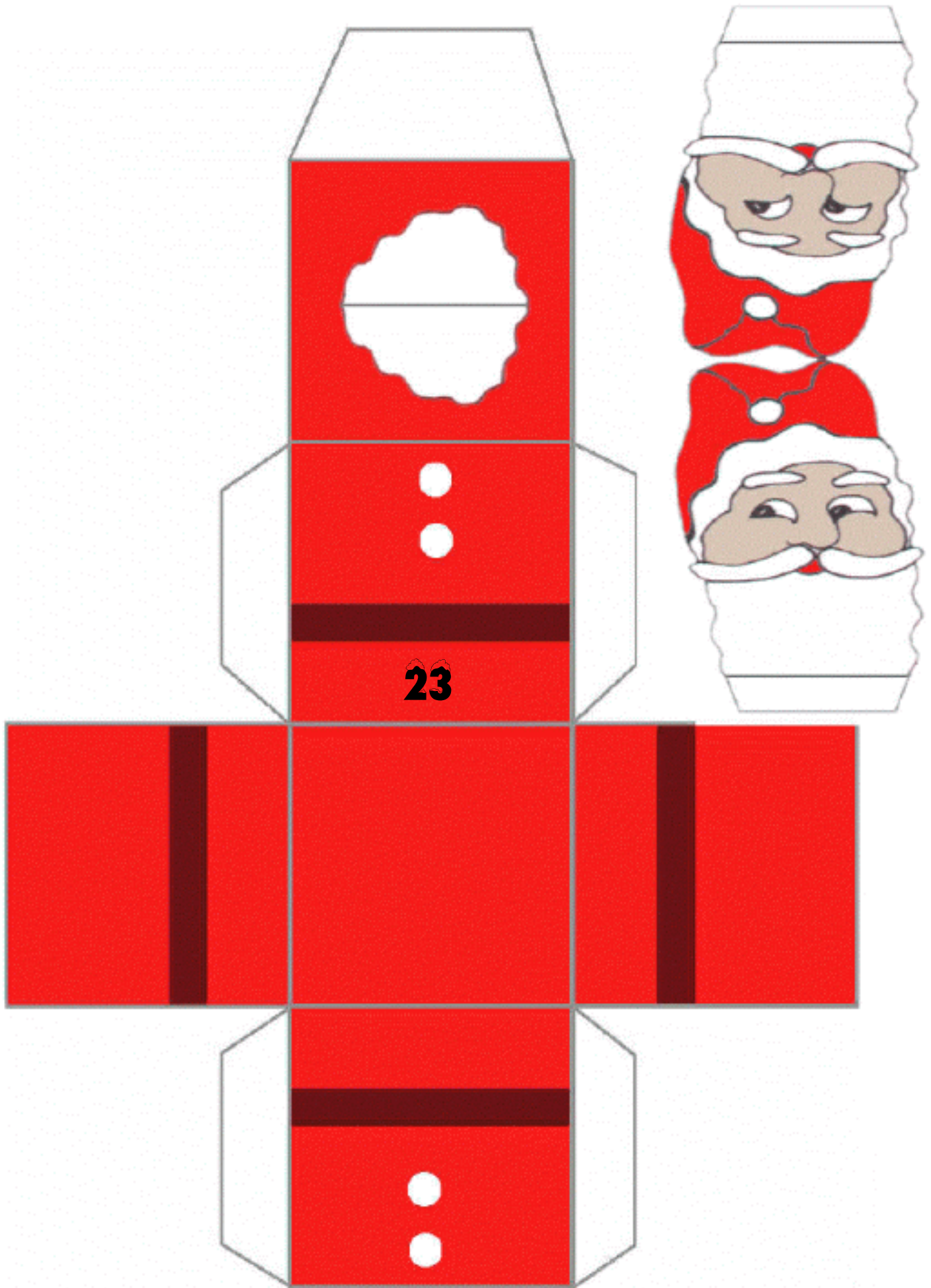
20



21



22



23

